

Drei neue Veränderliche: Qu2 = USNO-A2.0 1200-13096580, Fr5 = USNO A2.0 1200-13084491 und Brh V144 = GSC 1296.0975

Im Folgenden werden drei von Wolfgang Quester, Peter Frank und Klaus Bernhard entdeckte Veränderliche vorgestellt. Durch längere Beobachtungsreihen konnte Qu2 als halbregelmäßiger Veränderlicher, Fr5 und Brh V144 als W-UMa-Sterne klassifiziert werden. Die Entdeckungsmeldung erschien mit folgendem Kurztext in IBVS Nr. 5600 (15. Apr. 2004):

Date: 15 April 2004

Observer(s) and affiliation(s):

Quester, W. - BAV, Germany, wquester@aol.com
 Frank, P. - BAV, Germany, frank.velden@t-online.de
 Bernhard, K. - BAV, Austria, kl.bernhard@aon.at

RA(J2000) Dec(J2000) type Mag. Period Epoch

19 45 53.27 +32 13 34.1 SR 13.4 - 14.4 R - -

Cross-identification(s):

Qu2 = USNO-A2.0 1200-13096580 = 2MASS J194553.27+321335.02

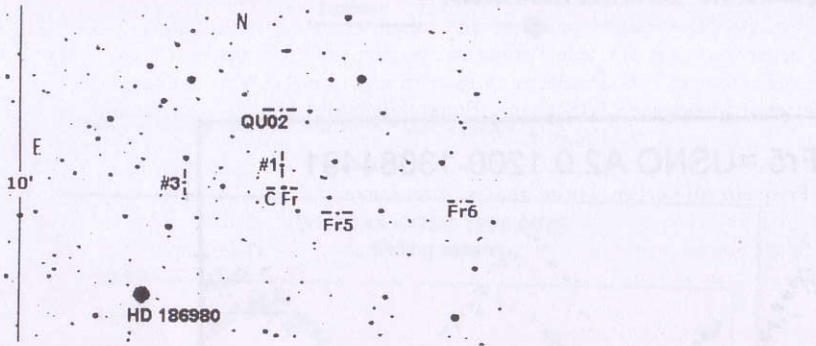


Figure 1. Finding chart of Qu2 = USNO-A2.0 1200-13096580

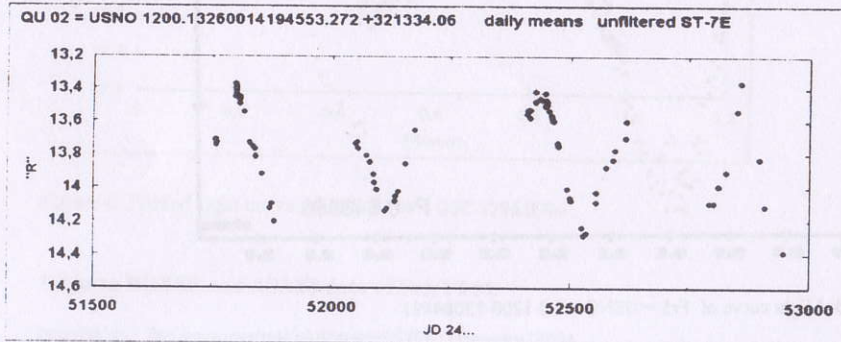


Figure 2. Light curve of Qu2 = USNO-A2.0 1200-13096580

RA(J2000) Dec(J2000) type Mag. Period Epoch
 19 45 43.43 +32 10 01.6 EW 13.7-14.0 (V) 0.648886 d 2452517.448
Cross-identification(s):
 Fr5 = USNO A2.0 1200-13084491

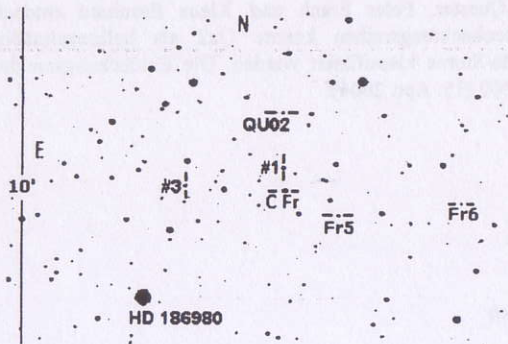


Figure 3. Finding chart of Fr5 = USNO A2.0 1200-13084491

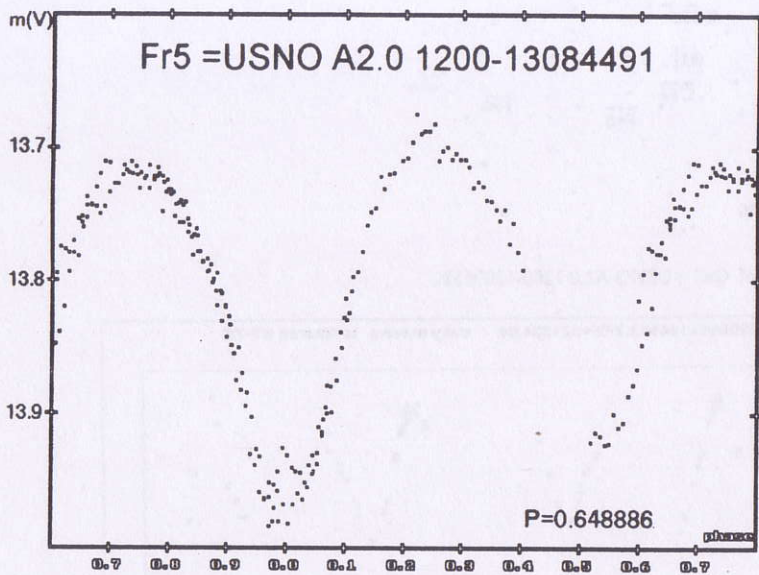


Figure 4. Folded light curve of Fr5 = USNO A2.0 1200-13084491

RA(J2000) Dec(J2000) type Mag. Period Epoch
 05 26 20.2 +15 37 00.1 EW 12.4-12.8 (V) 0.71738 d 2453059.568
Cross-identification(s):
 Brh V144 = GSC 1296.0975 = USNO-B1.0 1056-0077597

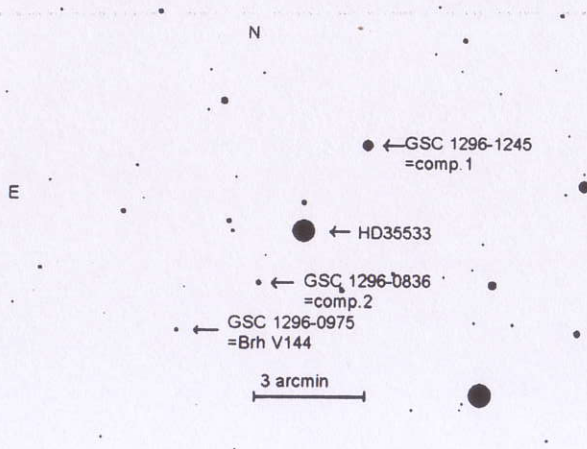


Figure 5. Finding chart of Brh V144 = GSC 1296.0975

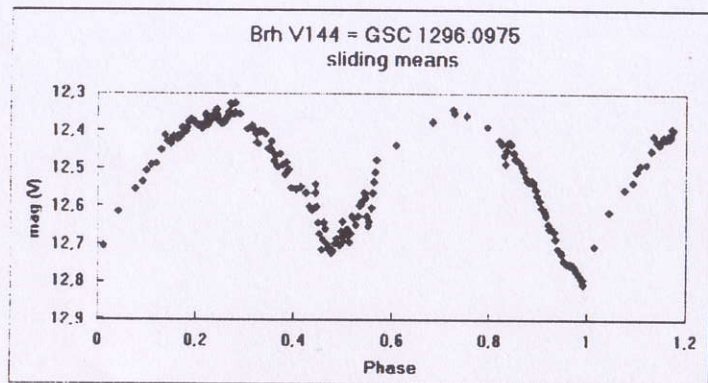


Figure 6. Folded light curve of Brh V144 = GSC 1296.0975

Links to ROTSE and ASAS3 data of Brh V144:

<http://skydot.lanl.gov/nsvs/star.php?num=9570532&mask=32004>
http://www.astrouw.edu.pl/cgi-asas/asas_cgi_get_data?052620+1537.0,asas3

